

Quick Start Guide

Fronius Smart Meter TS 5kA-3



[manuals.fronius.com/
html/4204260348](https://manuals.fronius.com/html/4204260348)

**FIND MORE
INFORMATION**



| Technical Data - General | |
|---------------------------------------------------------|------------------------------------------------------------------------------|
| Nominal voltage (3-phase) | 400 - 480 V |
| Operating range (class 1) | 320 - 552 V |
| Operating range (class 2) | 173 - 400 VLL ± (2 % RDG/accuracy) |
| Nominal voltage (1-phase) | 230 - 277 V |
| Operating range (class 1) | 184 - 318,55 V |
| Operating range (class 2) | 100 - 230 VLN ± (1 % RDG/accuracy) |
| Nominal frequency / Tolerance | 50 - 60 Hz / 45 - 65 Hz |
| Nominal / Maximum current | 1 A + 5 A / 6 A |
| Powerfactor range (EN/IEC 62053-21, EN/IEC 62053-23) | aktiv $\cos\phi$ 0.5 ind to 0.8 cap reaktiv $\sin\phi$ 0.5 ind to 0.5 cap |
| Current transformer ratio (kCT) | 1 - 1000 e. g. TC 800/5A kCT = 160 for direct connection: kCT = 1 |
| Voltage transformer ratio (kVT) | 1 - 1000 e. g. VT 20000/400V kVT = 50 for direct connection: kVT = 1 |
| Maximum value kVT x kCT | 1000 (CT/5A) |
| Permitted ambient temperature | from -25° to +65°C |
| Mounting | DIN rail 35 mm |
| IP range (EN60529) | IP54 / IP20 (Front / Connections) |

| Communication | |
|----------------------|----------------------------------------------------------------------------------|
| Standard | RS485 - 3 conductors |
| Protocol | Modbus RTU |
| Min. Softwareversion | Datamanager 2.0: 3.16.1 / Fronius Symo Hybrid: 1.16.1 / Fronius GEN24: 1.12.1 |

| Screw terminal | |
|-----------------------------------------------------|------------------------------------------------------------------------------|
| Measuring input / neutral line | 1 - 4 mm ² |
| Output (data communication /Auxiliary power supply) | 0,05 - 2,5 mm ² |
| Recommended torque | Measuring input: max. 0,6 Nm Output / Auxiliary power supply: max. 0,4 Nm |

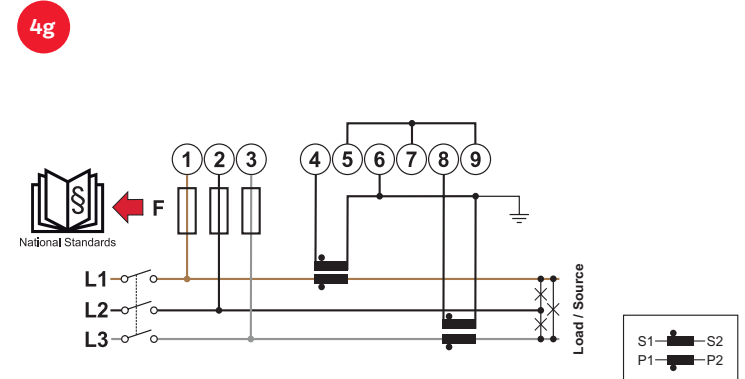
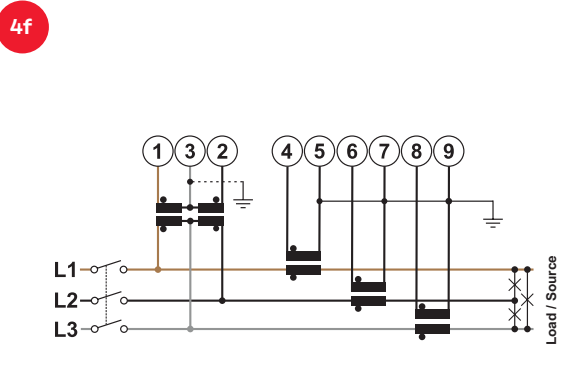
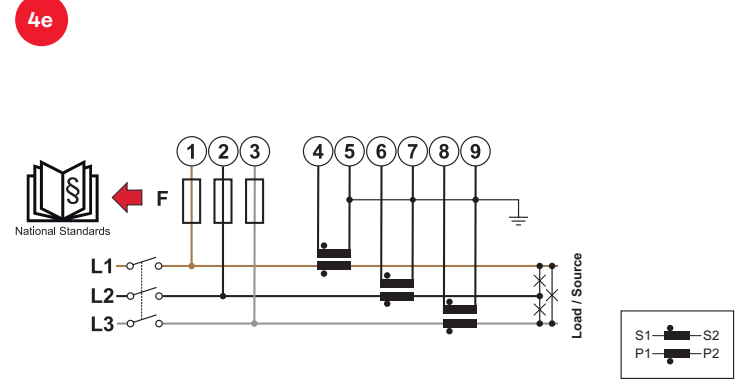
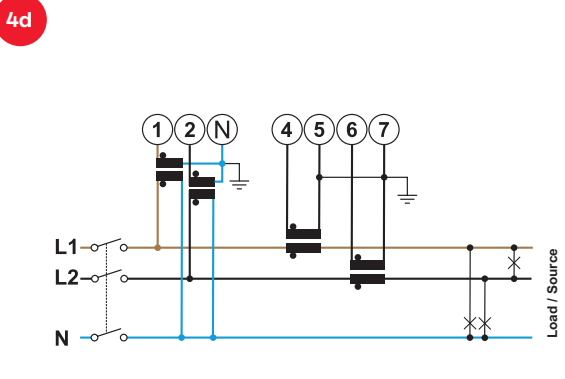
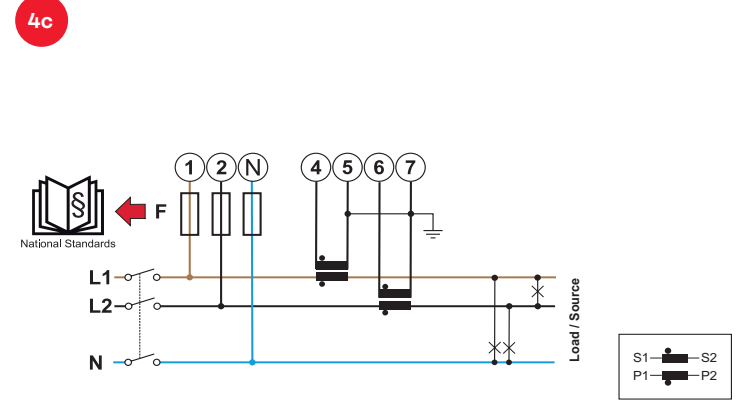
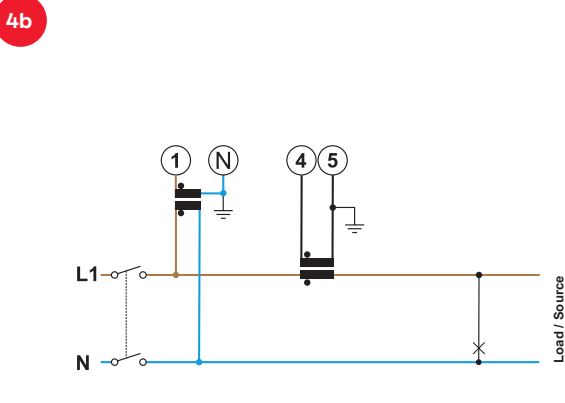
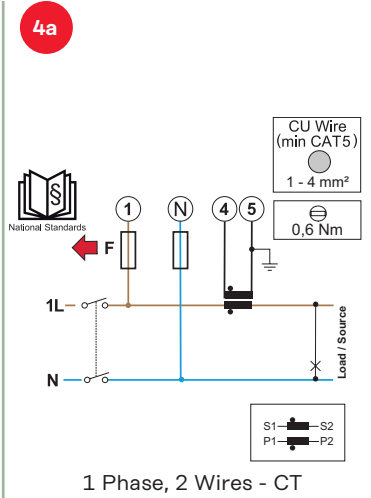
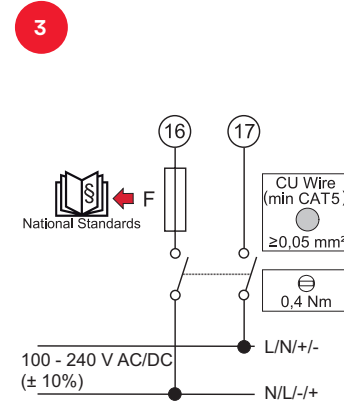
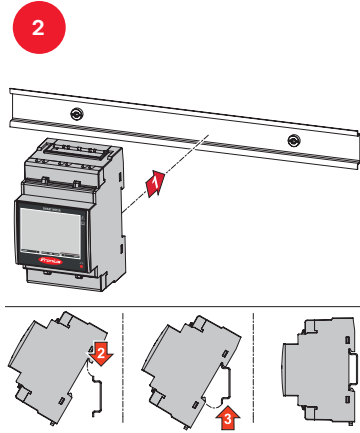
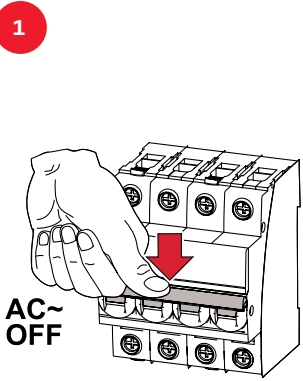
Detailed, country-specific warranty terms are available on: www.fronius.com/solar/warranty

AC~

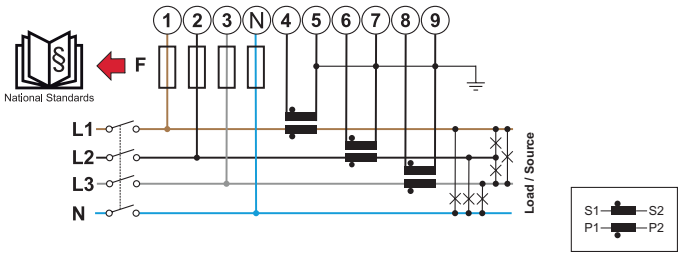
Mounting

Auxiliary Power Supply

Power Wiring

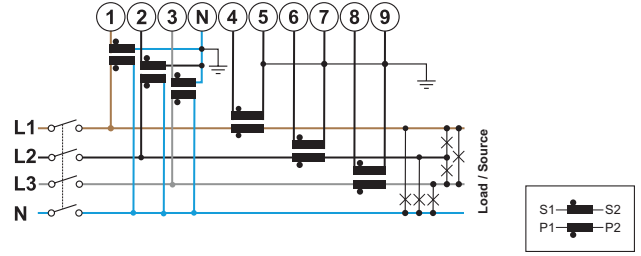


4h



3 Phases, 4 Wires - CT

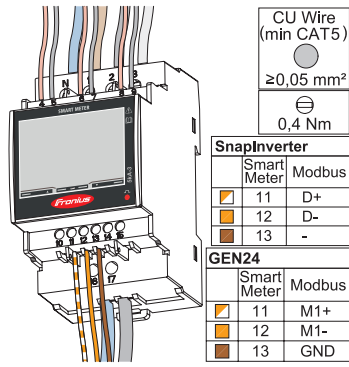
4i



3 Phases, 4 Wires - VT/CT

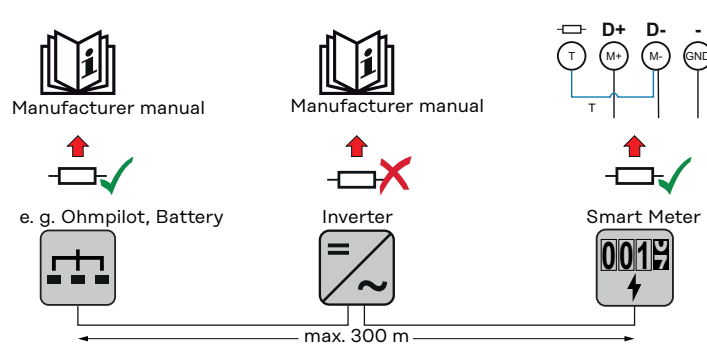
Data wiring

5



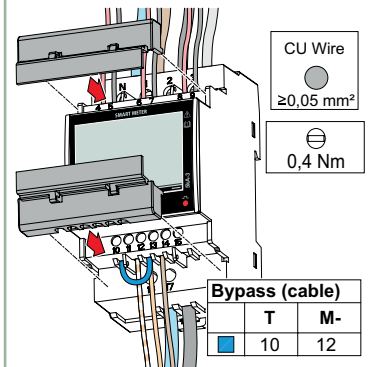
Terminating Resistor

6

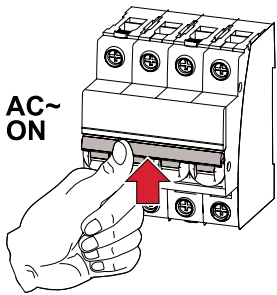


Close & Commissioning

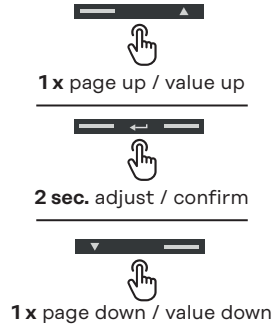
7



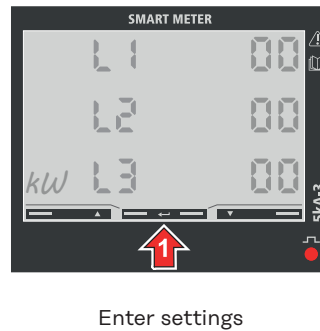
8



9



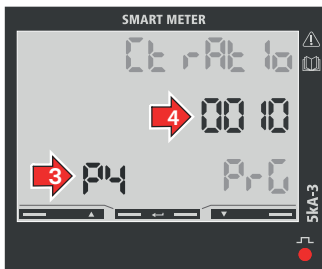
10



11

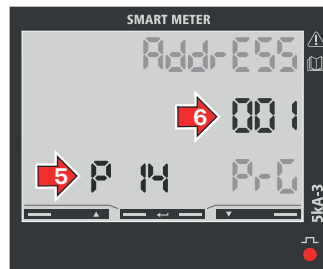


12



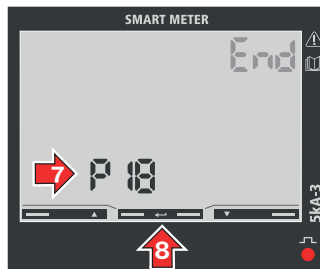
Transformation Ratio

13



Factory default: 001

14



Exit

15

